

## PATIENT EDUCATION SELECTIONS

### ANATOMICAL CHART COMPANY Gallstone Model with Diseases of the Digestive System Chart

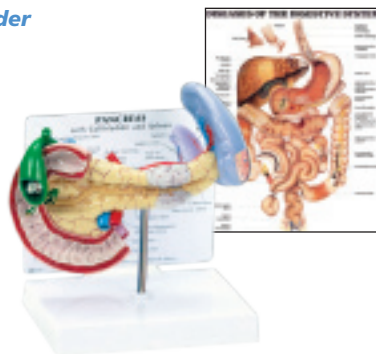
- Half life-size model of gallbladder shows cholecystitis and the tissue changes caused by chronic inflammation in the gallbladder wall. Also shows gallstones in the fundus and spiral valve. Mounted on base 5½" x 7"
- Coupled with "Diseases of the Digestive System" chart.

Selection #01

### ANATOMICAL CHART COMPANY Pancreas, Spleen, and Gallbladder Model with Diseases of the Digestive System Chart

- This life-size model shows several conditions of these abdominal organs. Pancreatic cancer, gallstones, a ruptured spleen, and a duodenal ulcer are illustrated. Model may be removed from stand for handling. 7¾" x 5"
- Coupled with "Diseases of the Digestive System" chart.

Selection #03



### ANATOMICAL CHART COMPANY Basic Human Systems Charts — Set of 5

- 5 flexible laminated 20" x 26" charts. Includes "The Muscular System," "The Vascular System and Viscera," "The Digestive System," "The Respiratory System" and the "Nervous System."

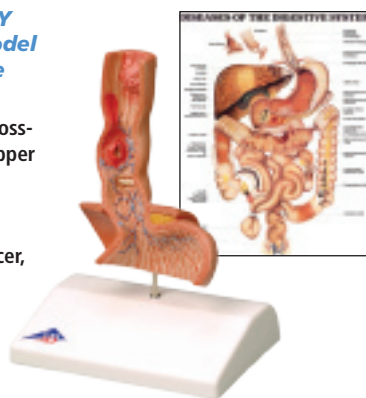
Selection #05



### ANATOMICAL CHART COMPANY Diseases of the Esophagus Model with Diseases of the Digestive System Chart

- This mounted life-size model of a cross-section of the esophagus and the upper part of the stomach coupled with "Diseases of the Digestive System" chart. Model shows the following conditions: reflux, ulcer, Barrett's ulcer, esophageal carcinoma, esophageal varices, and hiatal hernia.

Selection #07



### ANATOMICAL CHART COMPANY His OR Her Torso Anatomical Models Coupled with Digestive System Chart

- Dapper Dan Torso — 14 Parts
- Sweet Sue Torso — 14 Parts
- The Digestive System Chart

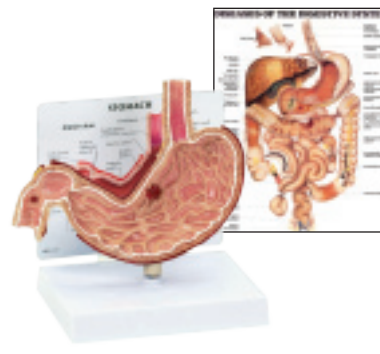
Selection #02



### ANATOMICAL CHART COMPANY Stomach Model with Diseases of the Digestive System Chart

- This one-piece, life-size cutaway of the stomach shows esophageal inflammation, gastric ulcer, and duodenal ulcer coupled with "Diseases of the Digestive System" chart.

Selection #04



### ANATOMICAL CHART COMPANY Gastroenterology Charts — Set of 5

- 5 flexible laminated 20" x 26" charts. Includes "The Digestive System," "Diseases of the Digestive System," "Gastroesophageal Disorders," "Understanding Ulcers," and "Understanding Colorectal Cancer"

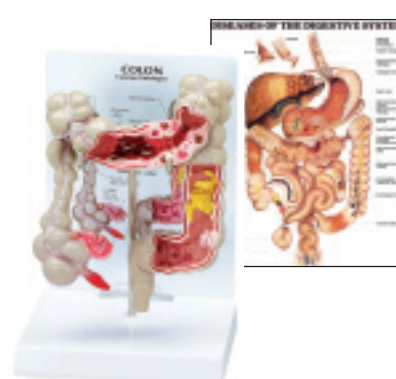
Selection #06



### ANATOMICAL CHART COMPANY Colon Model with Diseases of the Digestive System Chart

- Model of the large intestines shows anatomy as well as several common diseases and conditions, coupled with "Diseases of the Digestive System" chart.

Selection #08

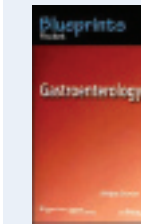


## MEDICAL TEXTBOOK SELECTIONS



### The 5-Minute Clinical Consult, 2009

Edition 17, 2008.  
LIPPINCOTT, WILLIAMS & WILKINS.  
Domino M.D., Frank; Baldor M.D., Robert A.; Ehrlich M.D., Alan M.; Golding M.G., Jeremy  
ISBN: #978-07817-7957-9  
Selection #09



### 2-book set Blueprints Pocket Gastroenterology

Edition 1, 2007.  
LIPPINCOTT, WILLIAMS & WILKINS.  
Grover M.D., Shilpa  
ISBN #978-1-4051-0470-8  
Selection #10

AND



### Manual of Gastroenterology

Edition 4, 2008.  
LIPPINCOTT, WILLIAMS & WILKINS.  
Avunduk M.D., Ph.D., Canan  
ISBN #978-07817-6974-7  
Selection #10



### Classic Anthology of Anatomical Charts

Edition 6, 2005.  
LIPPINCOTT, WILLIAMS & WILKINS.  
Anatomical Chart Company  
ISBN #978-1-58779-895-5  
Selection #11



### 2-book set Handbook of Gastroenterologic Procedures

Edition 4, 2005.  
LIPPINCOTT, WILLIAMS & WILKINS.  
Drossman M.D., Douglas A.; Grimm M.D., Ian S.; Shaheen M.D., Nicholas J.  
ISBN #978-07817-5008-0  
Selection #12

AND



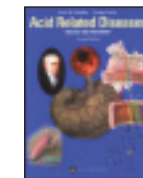
### The Washington Manual Gastroenterology Subspecialty Consult

Edition 2, 2008.  
LIPPINCOTT, WILLIAMS & WILKINS.  
Washington University School of Medicine Department of Medicine; Gyawali M.D., C.P.; DeFer M.D., Thomas; Henderson M.D., Katherine  
ISBN #978-07817-9150-2  
Selection #12



### Bratton's Family Medicine Board Review

Edition 3, 2007.  
LIPPINCOTT, WILLIAMS & WILKINS  
Bratton M.D., Robert  
ISBN #978-07817-7287-7  
Selection #13



### Acid Related Diseases: Biology and Treatment

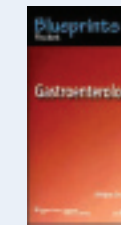
Edition 2, 2004.  
LIPPINCOTT, WILLIAMS & WILKINS.  
Modlin M.D., Ph.D., Irvin M.; Sachs M.D., Ch.B., D.S.c., George  
ISBN #978-07817-4123-1  
Selection #14



### 2-book set Physician's Drug Handbook

Edition 12, 2007.  
LIPPINCOTT, WILLIAMS & WILKINS.  
Springhouse  
ISBN #978-1-58255-680-2  
Selection #15

AND



### Blueprints Pocket Gastroenterology

Edition 1, 2007.  
LIPPINCOTT, WILLIAMS & WILKINS.  
Grover M.D., Shilpa  
ISBN #978-1-4051-0470-8  
Selection #15



### Primary Care for Women

Edition 2, 2003.  
LIPPINCOTT, WILLIAMS & WILKINS.  
Leppert M.D., Phyllis; Peipert M.D., Jeffrey  
ISBN #978-07817-3790-6  
Selection #16



### 2-book set Field Guide to Bedside Diagnosis

Edition 2, 2006.  
LIPPINCOTT, WILLIAMS & WILKINS.  
Smith M.D., F.A.C.P., David S.  
ISBN #978-07817-8165-7  
Selection #17

AND



### Taylor's 10-Minute Diagnosis Manual

Edition 2, 2006.  
LIPPINCOTT, WILLIAMS & WILKINS.  
Paulman M.D., Paul; Paulman M.D., Audrey; Harrison M.D., Jeffrey  
ISBN #978-07817-6944-0  
Selection #17



### The Gold Standard of Audio CME Subscription — 8 Issues (7+1 Bonus)

- New or extend current subscription — 7 issues in any specialty edition or extend current subscription.
- In addition, Audio Digest will send you a special bonus issue.
- You have 3 years from issue date to send in forms for CME credit.
- Each 1-hour program enables you to earn 2 hours of Category 1 CME.
- Choose from specialties: Gastroenterology, Family Practice, Internal Medicine, Pediatrics, Psychiatry or Obstetrics & Gynecology. CD or cassette available.

Selection #18



### 2-book set Washington Manual of Medical Therapeutics

Edition 32, 2007.  
LIPPINCOTT, WILLIAMS & WILKINS.  
Washington University School of Medicine Cooper M.D., Daniel; Krainik M.D., Andrew; Lubner M.D., Sam; Reno M.D., Ph.D., Hilary; Micek Pharm.D., Scott  
ISBN #978-07817-8125-1  
Selection #19

AND



### Primo Gastro: The Pocket GI Liver Companion

Edition 1, 2007.  
LIPPINCOTT, WILLIAMS & WILKINS.  
Guardino M.D., Jason  
ISBN #978-07817-7944-9  
Selection #19



### 2-book set Manual of Gastroenterology

Edition 4, 2008.  
LIPPINCOTT, WILLIAMS & WILKINS.  
Avunduk M.D., Ph.D., Canan  
ISBN #978-07817-6974-7  
Selection #20

AND



### The Washington Manual Gastroenterology Subspecialty Consult

Edition 2, 2008.  
LIPPINCOTT, WILLIAMS & WILKINS.  
Washington University School of Medicine Department of Medicine; Gyawali M.D., C.P.; DeFer M.D., Thomas; Henderson M.D., Katherine  
ISBN #978-07817-9150-2  
Selection #20



### 2-book set Washington Manual of Medical Therapeutics

Edition 32, 2007.  
LIPPINCOTT, WILLIAMS & WILKINS.  
Washington University School of Medicine Cooper M.D., Daniel; Krainik M.D., Andrew; Lubner M.D., Sam; Reno M.D., Ph.D., Hilary; Micek Pharm.D., Scott  
ISBN #978-07817-8125-1  
Selection #21

AND



### Pocket Medicine: MGH Handbook of Internal Medicine

Edition 3, 2007.  
LIPPINCOTT, WILLIAMS & WILKINS.  
Sabatine M.D., M.P.H., Marc  
ISBN #978-07817-7144-3  
Selection #21



### 2-book set Washington Manual of Medical Therapeutics

Edition 32, 2007.  
LIPPINCOTT, WILLIAMS & WILKINS.  
Washington University School of Medicine Cooper M.D., Daniel; Krainik M.D., Andrew; Lubner M.D., Sam; Reno M.D., Ph.D., Hilary; Micek Pharm.D., Scott  
ISBN #978-07817-8125-1  
Selection #22

AND



### The Washington Manual Gastroenterology Subspecialty Consult

Edition 2, 2008.  
LIPPINCOTT, WILLIAMS & WILKINS.  
Washington University School of Medicine Department of Medicine; Gyawali M.D., C.P.; DeFer M.D., Thomas; Henderson M.D., Katherine  
ISBN #978-07817-9150-2  
Selection #22



Please select one item from the choices below (Check ONE Box):

PRODUCT DESCRIPTIONS	SELECTION #	
ANATOMICAL CHART COMPANY Gallstone Model with Diseases of the Digestive System Chart	01	
ANATOMICAL CHART COMPANY Dapper Dan Torso Anatomical Model with Digestive Chart	02a	
ANATOMICAL CHART COMPANY Sweet Sue Torso Anatomical Model with Digestive Chart	02b	
ANATOMICAL CHART COMPANY Pancreas Model with Diseases of the Digestive System Chart	03	
ANATOMICAL CHART COMPANY Stomach Model with Diseases of the Digestive System Chart	04	
ANATOMICAL CHART COMPANY Basic Human Systems Charts — Set of 5	05	
ANATOMICAL CHART COMPANY Gastroenterology Charts — Set of 5	06	
ANATOMICAL CHART COMPANY Diseases of the Esophagus Model with Diseases of the Digestive System Chart	07	
ANATOMICAL CHART COMPANY Colon Model with Diseases of the Digestive System Chart	08	
TEXTBOOK DESCRIPTIONS	SELECTION #	
The 5-Minute Clinical Consult, 2009	09	
Blueprints Pocket Gastroenterology Manual of Gastroenterology	10	
Classic Anthology of Anatomical Charts	11	
Handbook of Gastroenterologic Procedures The Washington Manual Gastroenterology Subspecialty Consult	12	
Bratton's Family Medicine Board Review	13	
Acid Related Diseases: Biology and Treatment	14	
Physician's Drug Handbook Blueprints Pocket Gastroenterology	15	
Primary Care for Women	16	
Field Guide to Bedside Diagnosis Taylor's 10-Minute Diagnosis Manual	17	
AUDIO-DIGEST FOUNDATION Subscription — 8 Issues (7+1 Bonus) Subscription Type (Check One) <input type="checkbox"/> New Subscription <input type="checkbox"/> Old Subscription Media Type (Check One) <input type="checkbox"/> CD <input type="checkbox"/> Cassette Specialty: (Circle One) Gastroenterology , Family Practice, Internal Medicine, Pediatrics, Psychiatry or Obstetrics & Gynecology.	18	
Washington Manual of Medical Therapeutics Primo Gastro: The Pocket GI/Liver Companion	19	
Manual of Gastroenterology The Washington Manual Gastroenterology Subspecialty Consult	20	
Washington Manual of Medical Therapeutics Pocket Medicine: MGH Handbook of Internal Medicine	21	
Washington Manual of Medical Therapeutics The Washington Manual Gastroenterology Subspecialty Consult	22	

